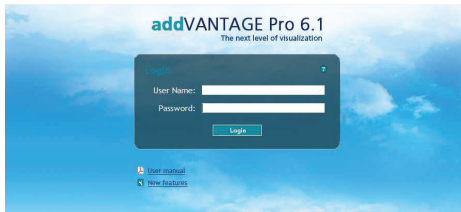




## Web Based Data Hosting Services

Aqualab's Data Hosting Services gives you full remote, Internet based access to your environmental monitoring data. You get all the features and flexibility of addVANTAGE Pro, without the need to install and maintain the software. Our server is always updated to the latest build, giving you first access to new features. The hosting service may be used with both our mobile phone and UHF based telemetry units.



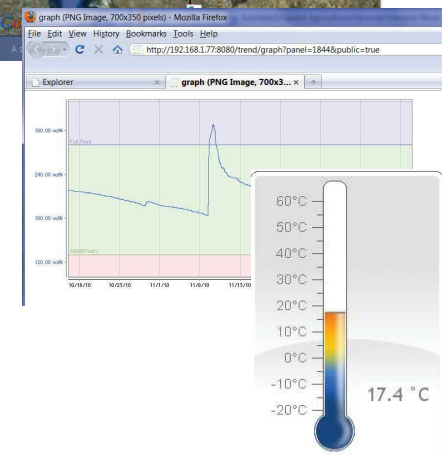
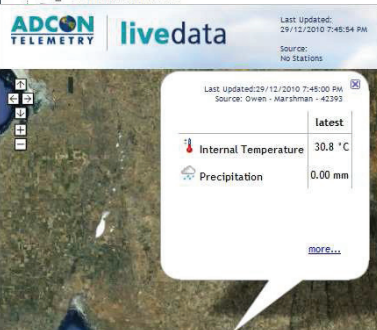
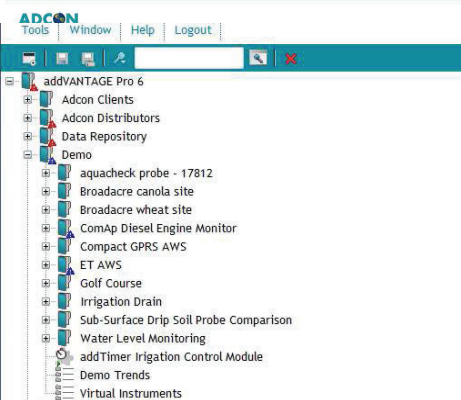
### DATA HOSTING FOR ALL MONITORING APPLICATIONS

Adcon's remote telemetry units (RTUs) are extremely versatile and may be used in a wide range of environmental monitoring applications.

Two types of RTU are available:

- UHF Radio units which feed their data back via 450-470MHz radio channel to an A850 Telemetry Gateway
- Mobile phone based units which send their data over a GPRS or GSM connection (on either the conventional or NextG networks) to an A850 Telemetry Gateway.

After collection in the A850 Telemetry Gateway, the data is displayed and analysed using the addVANTAGE Pro software. To save you the cost of installing and maintaining your own server system, your environmental data can be transferred to one of Aqualab's in-house servers.



addVANTAGE Pro was designed from the ground up for remote data acquisition. There is no cheap tacked on web front end here: remote users get exactly the same control over their data as if they were sitting on the machine on which the program was running. To access the data from your own office, all you need is a computer with an Internet connection and a web browser (the computer must also have Sun's free Java Runtime Environment (JRE) installed). From there you can log on to our server (with your user name and password) and have complete access to your data.

At any time, customers can opt out of the service and install their own copy of the advantage Pro software. At this time, our support staff will transfer all historic data to your new installation.

### WHAT IS INCLUDED

For a fixed monthly fee for each site / RTU, we will provide you with:

- Access to all data from the site
- Graph and tabular data views
- Complete range of statistical functions & disease models
- Basic templates to view the data: up to 4 trend graphs, up to 2 statistics extensions and a full event list
  - Extra templates can be created on a fee for service basis although, once familiar with the software, users can easily create their own.